

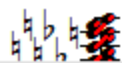


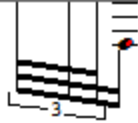
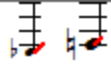
Acoustic Grand Piano

Musical score for Acoustic Grand Piano, bass clef, 4/4 time signature. The score shows a sequence of notes and rests across several measures. A green arrow points down to the first measure. A finger number '5' is written above the fifth measure. A treble clef appears at the end of the staff.

Pno

Musical score for Pno, treble clef, 4/4 time signature. The score shows a sequence of notes and rests across several measures. A finger number '10' is written above the fourth measure. A treble clef appears at the beginning of the staff. A triplet of notes is marked with a '3' at the bottom right.





Pno

Pno

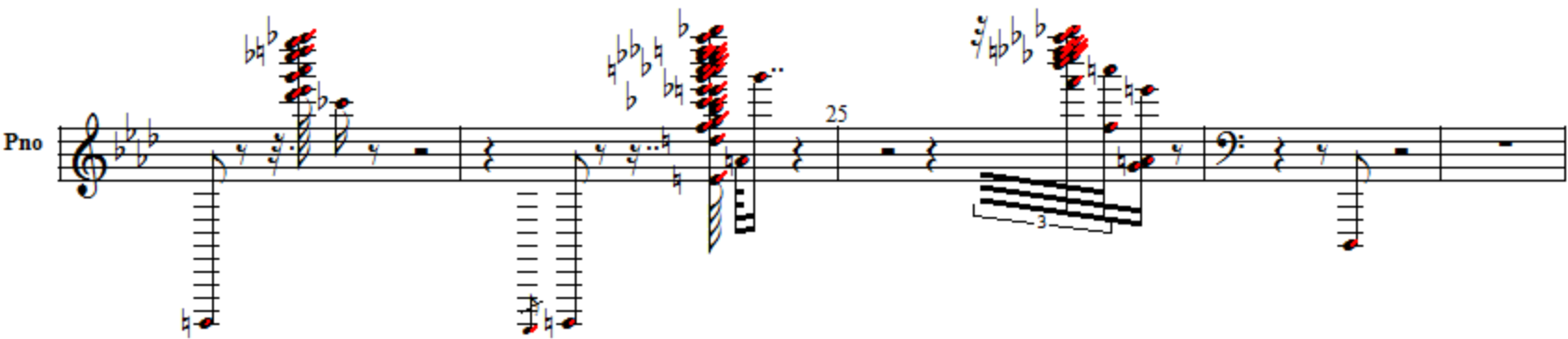
Piano (Pno) score, first system. The system consists of a single staff with a treble clef and a key signature of two flats (B-flat and E-flat). The music features a series of chords and melodic fragments, with some notes highlighted in red. The notation includes quarter notes, eighth notes, and rests.



Piano (Pno) score, second system. The system consists of a single staff with a bass clef and a key signature of two flats. The music features a series of chords and melodic fragments, with some notes highlighted in red. The notation includes quarter notes, eighth notes, and rests. A measure number '20' is visible above the staff.



Piano (Pno) score, third system. The system consists of a single staff with a treble clef and a key signature of two flats. The music features a series of chords and melodic fragments, with some notes highlighted in red. The notation includes quarter notes, eighth notes, and rests. A measure number '25' is visible above the staff. A triplet of notes is indicated by a bracket and the number '3' below the staff.



Piano score for measures 30-34. The score is written for piano (Pno) in a key signature of two flats (B-flat and E-flat). The notation includes a bass clef for measures 30-31 and a treble clef for measures 32-34. Measure 30 features a quarter note in the bass clef and a whole note chord in the treble clef. Measure 31 has a quarter note in the bass clef and a whole note chord in the treble clef. Measure 32 has a quarter note in the bass clef and a whole note chord in the treble clef. Measure 33 has a quarter note in the bass clef and a whole note chord in the treble clef. Measure 34 has a quarter note in the bass clef and a whole note chord in the treble clef. Red markings indicate fingerings and accents. A bracket with the number '3' is placed over the notes in measure 33.

Piano score for measures 35-39. The score is written for piano (Pno) in a key signature of two flats (B-flat and E-flat). The notation includes a treble clef for measures 35-36 and a bass clef for measures 37-39. Measure 35 features a quarter note in the treble clef and a whole note chord in the bass clef. Measure 36 has a quarter note in the treble clef and a whole note chord in the bass clef. Measure 37 has a quarter note in the bass clef and a whole note chord in the treble clef. Measure 38 has a quarter note in the bass clef and a whole note chord in the treble clef. Measure 39 has a quarter note in the bass clef and a whole note chord in the treble clef. Red markings indicate fingerings and accents. A bracket with the number '3' is placed over the notes in measure 37.

Piano score for measures 40-44. The score is written for piano (Pno) in a key signature of two flats (B-flat and E-flat). The notation includes a treble clef for measures 40-41 and a bass clef for measures 42-44. Measure 40 features a quarter note in the treble clef and a whole note chord in the bass clef. Measure 41 has a quarter note in the treble clef and a whole note chord in the bass clef. Measure 42 has a quarter note in the bass clef and a whole note chord in the treble clef. Measure 43 has a quarter note in the bass clef and a whole note chord in the treble clef. Measure 44 has a quarter note in the bass clef and a whole note chord in the treble clef. Red markings indicate fingerings and accents.

Piano score, measures 40-45. The score is in G-flat major (three flats) and 4/4 time. Measure 40 is mostly rests. Measure 41 features a complex chord with red markings and a bass line starting with a quarter note. Measure 42 has a bass line with a quarter note and a fermata. Measure 43 is mostly rests. Measure 44 has a bass line with a quarter note and a fermata. Measure 45 features a bass line with a quarter note and a fermata.

Piano score, measures 46-50. The score is in G-flat major (three flats) and 4/4 time. Measure 46 has a treble clef with a quarter note and a complex chord with red markings. Measure 47 has a treble clef with a quarter note and a complex chord with red markings. Measure 48 has a treble clef with a quarter note and a complex chord with red markings. Measure 49 has a treble clef with a quarter note and a complex chord with red markings. Measure 50 has a treble clef with a quarter note and a complex chord with red markings.

Piano score, measures 51-55. The score is in G-flat major (three flats) and 4/4 time. Measure 51 has a treble clef with a quarter note and a complex chord with red markings. Measure 52 has a treble clef with a quarter note and a complex chord with red markings. Measure 53 has a treble clef with a quarter note and a complex chord with red markings. Measure 54 has a treble clef with a quarter note and a complex chord with red markings. Measure 55 has a treble clef with a quarter note and a complex chord with red markings.

Piano score for Pno (Piano) in G-flat major (two flats).

The score is divided into three systems, each with handwritten fingering and voicing annotations above the notes.

System 1 (Measures 45-50): Features a melodic line with a fermata over measure 49. The right hand has a complex texture with many beamed notes and slurs. The left hand has a simple accompaniment.

System 2 (Measures 51-55): Continues the melodic line. The right hand has a dense texture with many beamed notes and slurs. The left hand has a simple accompaniment.

System 3 (Measures 56-65): Continues the melodic line. The right hand has a dense texture with many beamed notes and slurs. The left hand has a simple accompaniment.

Measures 50, 55, 60, and 65 are marked with measure numbers.

Piano score, measures 70-75. The piece is in a key with two flats (B-flat and E-flat). Measure 70 begins with a treble clef and a key signature of two flats. The notation shows a series of rests in the right hand, with a few notes in the left hand. Measure 75 features a triplet of eighth notes in the right hand, marked with a '3' below it. The score is written on a single staff.

Piano score, measures 76-80. This section features complex textures with multiple staves. The right hand has a melodic line with a slur and a fermata over measures 76-79. The left hand has a bass line with a triplet of eighth notes in measure 79, marked with a '3' below it. There are several accidentals (flats and naturals) throughout the passage. The score is written on a single staff.

Piano score, measures 81-85. This section continues the complex texture. It features a triplet of eighth notes in the right hand in measure 84, marked with a '3' above it. The notation includes various accidentals and slurs. The score is written on a single staff.

Pno

Handwritten musical score for piano (Pno) in G-flat major (two flats). The score is written on a grand staff with a treble clef. The first system contains two measures. The first measure features a complex chord structure with notes G-flat, B-flat, and D-flat, and includes a triplet of sixteenth notes in the right hand. The second measure continues the harmonic progression with similar chords and includes a triplet of sixteenth notes in the right hand. The score is annotated with red markings on the notes and includes various accidentals (flats and naturals).

Pno

Handwritten musical score for piano (Pno) in G-flat major (two flats). The score is written on a grand staff with a treble clef. The second system contains two measures. The first measure features a complex chord structure with notes G-flat, B-flat, and D-flat, and includes a triplet of sixteenth notes in the right hand. The second measure continues the harmonic progression with similar chords and includes a triplet of sixteenth notes in the right hand. The score is annotated with red markings on the notes and includes various accidentals (flats and naturals).

Pno

Musical score for piano, measures 85-90. The score is in G-flat major (two flats) and 3/4 time. It features complex chordal textures with many accidentals and some triplets. Handwritten annotations include 'f' for fortissimo, 'p' for piano, and 'ce' for crescendo. A '3' above a triplet of chords is present at the beginning.

Pno

Musical score for piano, measures 90-95. The score continues with complex chordal textures. A '3' above a triplet of chords is present at the beginning of the section. Handwritten annotations include 'f' for fortissimo and 'p' for piano.

Pno

Musical score for piano, measures 95-100. The score continues with complex chordal textures. Handwritten annotations include 'f' for fortissimo and 'p' for piano. Measure numbers 95, 100, and 105 are visible at the bottom of the page.

Handwritten musical score for Piano (Pno) in G-flat major (three flats). The score is divided into four systems, with measures 105, 110, 115, 120, 125, and 130 marked.

System 1: Measures 105-110. The piano part is mostly rests, with some notes appearing in measure 110.

System 2: Measures 115-120. The piano part is mostly rests, with some notes appearing in measure 120.

System 3: Measures 125-130. This system contains complex piano accompaniment. It features dense chordal textures, including a large block chord in measure 125. The notation includes triplets, slurs, and dynamic markings such as *acc.* (accents) and *sc.* (scordatura).

System 4: Measures 130-135. This system continues the complex piano accompaniment with dense chordal textures and triplets.



Pno

Musical score for piano (Pno) in G-flat major (three flats). Measures 115-120. The score shows a treble clef with a key signature of three flats. Measure 115 is a whole rest. Measure 116 is a whole rest. Measure 117 is a whole rest. Measure 118 is a whole rest. Measure 119 is a whole rest. Measure 120 begins with a quarter note G-flat, followed by a quarter rest, a quarter note G-flat, a quarter rest, a quarter note G-flat, a quarter rest, a quarter note G-flat, a quarter rest, and a quarter note G-flat. A fermata is placed over the final G-flat.

Pno

Musical score for piano (Pno) in G-flat major (three flats). Measures 125-130. The score shows a treble clef with a key signature of three flats. Measure 125 is a whole rest. Measure 126 is a whole rest. Measure 127 is a whole rest. Measure 128 is a whole rest. Measure 129 begins with a quarter note G-flat, followed by a quarter rest, a quarter note G-flat, a quarter rest, a quarter note G-flat, a quarter rest, a quarter note G-flat, a quarter rest, and a quarter note G-flat. A fermata is placed over the final G-flat. Measure 130 begins with a quarter note G-flat, followed by a quarter rest, a quarter note G-flat, a quarter rest, a quarter note G-flat, a quarter rest, a quarter note G-flat, a quarter rest, and a quarter note G-flat. A fermata is placed over the final G-flat.

Pno

Musical score for piano (Pno) in G-flat major (three flats). Measures 130-135. The score shows a treble clef with a key signature of three flats. Measure 130 begins with a quarter note G-flat, followed by a quarter rest, a quarter note G-flat, a quarter rest, a quarter note G-flat, a quarter rest, a quarter note G-flat, a quarter rest, and a quarter note G-flat. A fermata is placed over the final G-flat. Measure 131 begins with a quarter note G-flat, followed by a quarter rest, a quarter note G-flat, a quarter rest, a quarter note G-flat, a quarter rest, a quarter note G-flat, a quarter rest, and a quarter note G-flat. A fermata is placed over the final G-flat. Measure 132 begins with a quarter note G-flat, followed by a quarter rest, a quarter note G-flat, a quarter rest, a quarter note G-flat, a quarter rest, a quarter note G-flat, a quarter rest, and a quarter note G-flat. A fermata is placed over the final G-flat. Measure 133 begins with a quarter note G-flat, followed by a quarter rest, a quarter note G-flat, a quarter rest, a quarter note G-flat, a quarter rest, a quarter note G-flat, a quarter rest, and a quarter note G-flat. A fermata is placed over the final G-flat. Measure 134 begins with a quarter note G-flat, followed by a quarter rest, a quarter note G-flat, a quarter rest, a quarter note G-flat, a quarter rest, a quarter note G-flat, a quarter rest, and a quarter note G-flat. A fermata is placed over the final G-flat. Measure 135 begins with a quarter note G-flat, followed by a quarter rest, a quarter note G-flat, a quarter rest, a quarter note G-flat, a quarter rest, a quarter note G-flat, a quarter rest, and a quarter note G-flat. A fermata is placed over the final G-flat.

Pno

135

Pno

140

Pno

145 150

Pno

155 160 165

Pno

170 175

Piano (Pno) score in G-flat major (two flats) and 4/4 time. The score is divided into four systems, with measures 170-175, 180-185, 190-195, and 200-205 indicated.

System 1 (Measures 170-175): The piano part consists of whole rests in all measures.

System 2 (Measures 180-185): Measures 180-184 contain whole rests. In measure 185, there is a triplet of eighth notes: G^b4, A^b4, and B^b4. Measure 186 contains a whole rest.

System 3 (Measures 190-195): Measures 190-194 contain whole rests. In measure 195, there is a quarter note G^b4. Above the staff, there are handwritten diagrams for chords: a triad of G^b4, A^b4, and B^b4, and a dyad of G^b4 and A^b4.

System 4 (Measures 200-205): Measures 200-204 contain quarter notes: G^b4, A^b4, B^b4, and C^b5. In measure 205, there is a complex passage with a triplet of eighth notes (G^b4, A^b4, B^b4) and a triplet of sixteenth notes (G^b4, A^b4, B^b4). Handwritten notes "rizz" and "rizz" are present above the staff. Below the staff, there are handwritten diagrams for chords: a triad of G^b4, A^b4, and B^b4, and a dyad of G^b4 and A^b4.



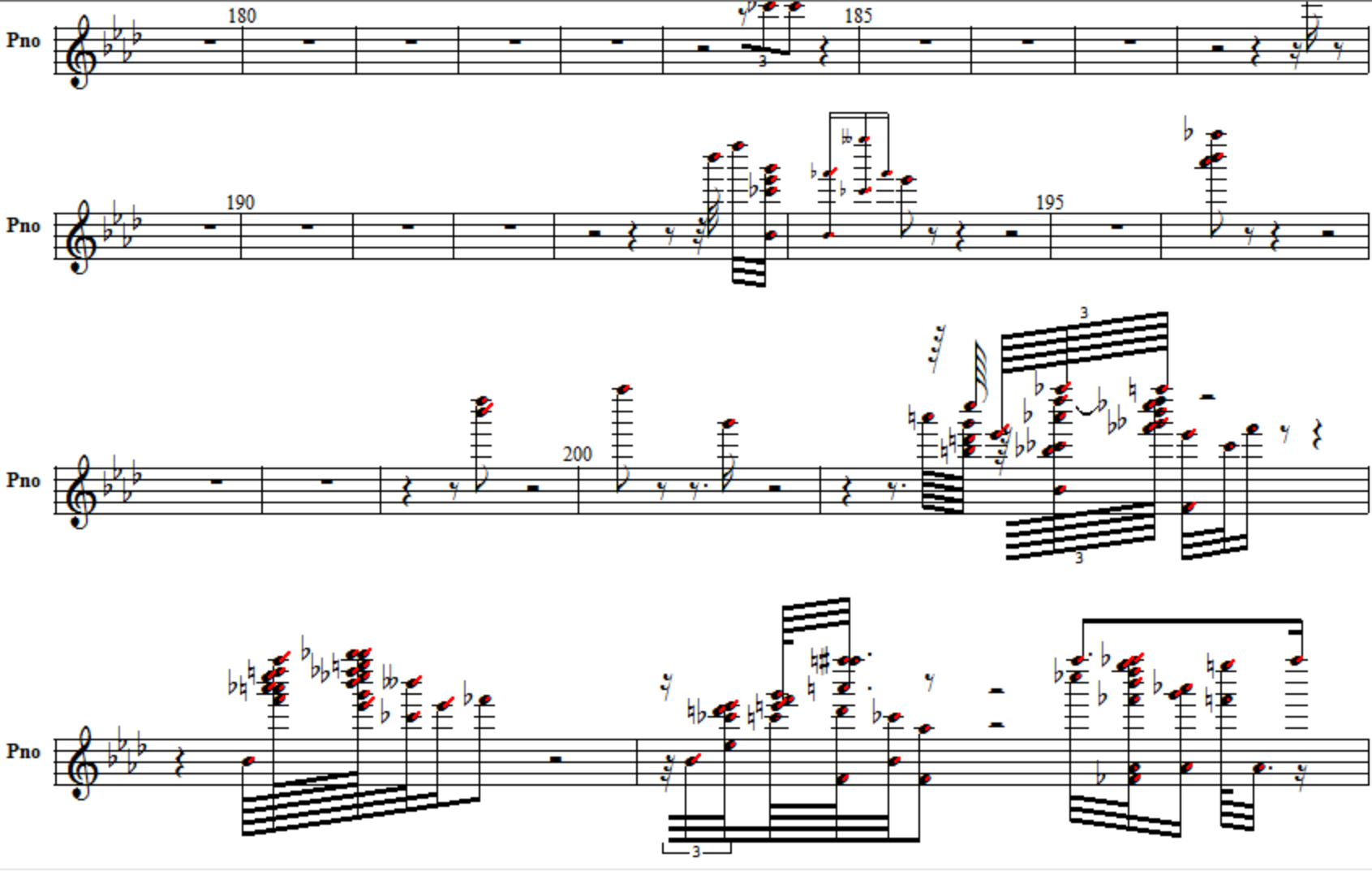
Piano (Pno) score, measures 180-205. The score is written in treble clef with a key signature of two flats (B-flat and E-flat). The music features complex textures, including dense chords, triplets, and slurs. Red dots are placed on various notes throughout the score, likely indicating specific performance or editing points.

Measures 180-185: The first system shows a series of rests followed by a triplet of eighth notes in measure 184. A red dot is placed on the first note of the triplet.

Measures 190-195: The second system shows rests followed by a quarter note in measure 194. A red dot is placed on this note.

Measures 200-205: The third system shows a quarter note in measure 200, followed by a triplet of eighth notes in measure 201. A red dot is placed on the first note of the triplet. The system concludes with a triplet of eighth notes in measure 205, with a red dot on the first note.

Measures 205-210: The fourth system shows a triplet of eighth notes in measure 205, followed by a quarter note in measure 206. A red dot is placed on the first note of the triplet. The system concludes with a quarter note in measure 210, with a red dot on this note.



Pno

Musical score for piano (Pno) in G-flat major (two flats). The score covers measures 195 to 205. The notation includes a treble clef, a key signature of two flats, and a 4/4 time signature. The music features complex chordal textures with many accidentals (sharps and flats) and some ledger lines. A fermata is placed over the final note of measure 205. The number '205' is printed above the staff at the beginning of the second system.

Pno

Musical score for piano (Pno) in G-flat major (two flats). The score covers measures 206 to 216. The notation includes a treble clef, a key signature of two flats, and a 4/4 time signature. The music continues with complex chordal textures and accidentals. A fermata is placed over the final note of measure 216.

Musical score for piano (Pno) in G-flat major (two flats). The score covers measures 217 to 222. The notation includes a treble clef, a key signature of two flats, and a 4/4 time signature. The music continues with complex chordal textures and accidentals. A fermata is placed over the final note of measure 222.

210 Pno

Handwritten musical notation for piano (Pno) starting at measure 210. The score is in G major (one sharp) and 4/4 time. It features complex chordal textures with many accidentals (sharps and flats) and some red markings on the notes. A pink annotation "vel = 26" is present above the staff. The music includes various note values, rests, and a triplet in the final measure.

Pno

Handwritten musical notation for piano (Pno) continuing from measure 210. The score is in G major (one sharp) and 4/4 time. It features complex chordal textures with many accidentals (sharps and flats) and some red markings on the notes. A large rectangular box highlights a section of the music from measure 218 to 220. The notation includes various note values, rests, and accidentals.

Handwritten musical notation for piano (Pno) continuing from measure 210. The score is in G major (one sharp) and 4/4 time. It features complex chordal textures with many accidentals (sharps and flats) and some red markings on the notes. The notation includes various note values, rests, and accidentals.

This musical score for piano (Pno) is written in a key with two flats (B-flat and E-flat) and a 4/4 time signature. The piece features a complex interplay of textures. The right hand (RH) is characterized by dense, multi-voiced chords, often with red dots marking specific notes, and melodic lines with slurs and accents. The left hand (LH) provides a rhythmic and harmonic foundation with sustained notes and moving lines. A prominent feature is a large, multi-measure rest in the RH, spanning several measures, during which the LH continues to play. The score includes various musical notations such as slurs, accents, and dynamic markings.

This section of the piano score continues the complex textures established in the previous system. The right hand (RH) features intricate chordal passages with red dots highlighting specific notes, often moving in a chromatic or stepwise fashion. The left hand (LH) maintains a steady accompaniment with moving lines and sustained notes. The score includes various musical notations such as slurs, accents, and dynamic markings, contributing to the overall expressive and technical demands of the piece.

215

Pno

This musical score for piano (Pno) covers measures 215 to 225. It is written in a grand staff with a treble clef and a key signature of two flats (B-flat and E-flat). The music features complex textures with multiple voices in both hands. Measure 215 begins with a treble clef and a key signature of two flats. The right hand has a melodic line with slurs and accents, while the left hand provides harmonic support with chords and moving lines. Measures 216-217 contain a triplet of eighth notes in the right hand. Measures 218-220 show a continuation of the melodic and harmonic development. Measure 221 features a triplet of eighth notes in the right hand. Measures 222-225 conclude the section with a final cadence and a key signature change to one flat (B-flat).

Pno

This musical score for piano (Pno) covers measures 226 to 235. It continues in the same grand staff with a treble clef and a key signature of one flat (B-flat). The texture remains complex, with intricate voicings in both hands. Measure 226 starts with a treble clef and a key signature of one flat. The right hand has a melodic line with slurs and accents, while the left hand provides harmonic support with chords and moving lines. Measures 227-228 contain a triplet of eighth notes in the right hand. Measures 229-231 show a continuation of the melodic and harmonic development. Measure 232 features a triplet of eighth notes in the right hand. Measures 233-235 conclude the section with a final cadence and a key signature change to two flats (B-flat and E-flat).

This musical score for piano (Pno) covers measures 236 to 245. It continues in the same grand staff with a treble clef and a key signature of two flats (B-flat and E-flat). The texture remains complex, with intricate voicings in both hands. Measure 236 starts with a treble clef and a key signature of two flats. The right hand has a melodic line with slurs and accents, while the left hand provides harmonic support with chords and moving lines. Measures 237-238 contain a triplet of eighth notes in the right hand. Measures 239-241 show a continuation of the melodic and harmonic development. Measure 242 features a triplet of eighth notes in the right hand. Measures 243-245 conclude the section with a final cadence and a key signature change to one flat (B-flat).

Pno

This musical score for Piano (Pno) is written in a key with two flats (B-flat and E-flat) and a 4/4 time signature. The piece is characterized by dense, complex chordal textures. The right hand features intricate voicings with many notes per chord, often including accidentals (sharps and flats) and slurs. The left hand provides a more rhythmic and harmonic foundation, with some triplets and sustained notes. The score includes various musical notations such as slurs, ties, and dynamic markings like *mf* and *f*. The overall style is highly technical and expressive.

Pno

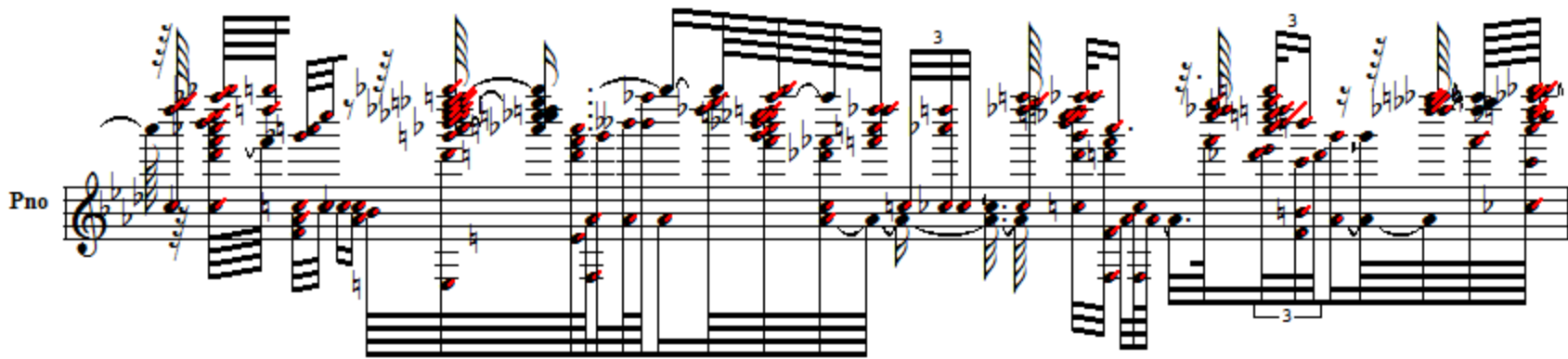
This section of the musical score continues the complex textures established in the previous system. It features similar dense chordal structures in the right hand and rhythmic accompaniment in the left hand. The notation includes slurs, ties, and dynamic markings such as *mf* and *f*. The piece maintains its technical and expressive character throughout.

Piano score system 1. The right hand (treble clef) contains a melodic line with a trill and a triplet. The left hand (bass clef) features a complex chordal texture with a triplet of eighth notes. A red 'x' is marked above the first note of the left hand's triplet.

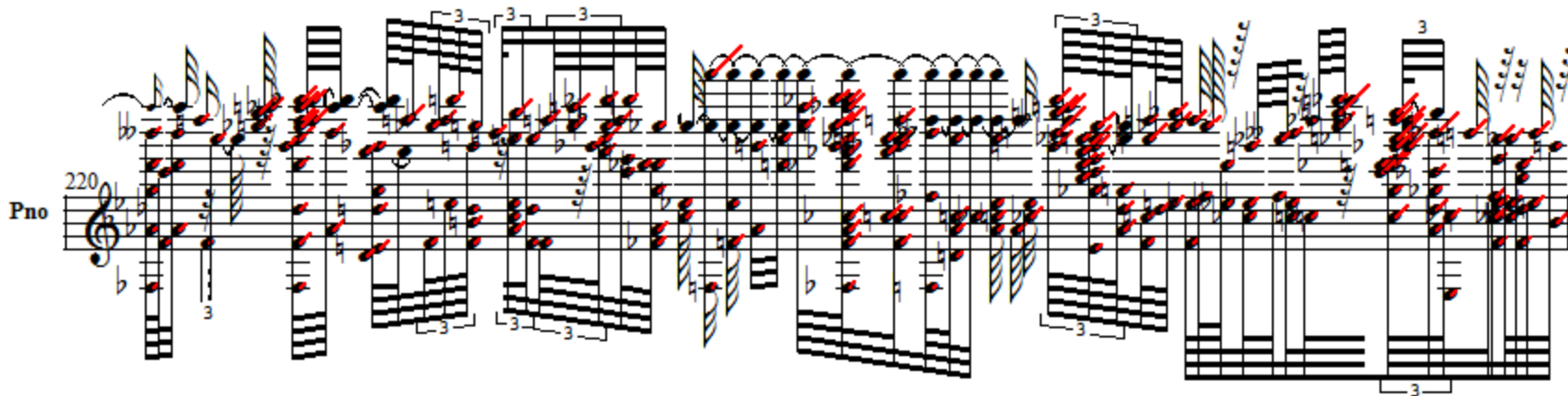
Piano score system 2. The right hand contains a highly complex, dense texture with many notes, some marked with red 'x's and slurs. The left hand continues with a melodic line and chordal accompaniment, including a triplet. A red 'x' is marked above the first note of the left hand's triplet.

Piano score system 3, starting at measure 220. The right hand features a complex texture with many notes, some marked with red 'x's and slurs. The left hand continues with a melodic line and chordal accompaniment, including a triplet. A red 'x' is marked above the first note of the left hand's triplet.

Piano score for the first system, labeled "Pno". The music is written on a grand staff with a treble clef and a key signature of one flat (B-flat). The score features complex rhythmic patterns, including triplets and sixteenth-note runs. Red arrows and dots are used to highlight specific notes and fingerings. The notation includes various accidentals (flats and naturals) and dynamic markings such as *secco* and *acc.*. The system concludes with a triplet of eighth notes.



Piano score for the second system, labeled "Pno" and starting at measure 220. The music continues with complex rhythmic patterns, including triplets and sixteenth-note runs. Red arrows and dots are used to highlight specific notes and fingerings. The notation includes various accidentals (flats and naturals) and dynamic markings such as *secco* and *acc.*. The system concludes with a triplet of eighth notes.



Pno

Handwritten musical score for piano (Pno) in G-flat major (two flats). The score covers measures 215 to 224. The right hand features a complex melodic line with many accidentals and slurs, including a triplet in measure 218. The left hand provides a harmonic accompaniment with chords and triplets. Red markings highlight specific notes and accidentals throughout the passage.

Pno

Handwritten musical score for piano (Pno) in G-flat major (two flats), covering measures 225 to 234. The right hand is mostly silent, with a few notes in measures 225, 226, and 234. The left hand plays a steady accompaniment of quarter notes. Measure numbers 225 and 230 are printed above the staff.

Pno

Handwritten musical score for piano (Pno) in G-flat major (two flats), covering measures 235 to 244. The right hand is mostly silent, with a few notes in measures 235 and 236. The left hand plays a steady accompaniment of quarter notes. Measure numbers 235 and 240 are printed above the staff.



Pno

245 250

Pno

255 260

Pno

265 270

Pno

275 280

Pno

285 290



Pno

255 260

Pno

265 270

Pno

275 280

Pno

285 290

Pno

295 300

Pno 390 395

Pno 400 405

Pno 410 415 420

Pno 425 430

Pno 435 440

Pno 445 450

Piano (Pno) score, measures 305 to 395. The score is written in bass clef with a key signature of two flats (B-flat and E-flat). The music consists of a series of whole notes, with some measures containing rests. Measure numbers are indicated above the staff.

Measures 305-315: Measures 305-310 contain whole notes, and measures 311-315 contain rests. Measure numbers 305, 310, and 315 are marked above the staff.

Measures 320-325: Measures 320-325 contain whole notes, and measures 326-330 contain rests. Measure numbers 320 and 325 are marked above the staff.

Measures 330-340: Measures 330-335 contain whole notes, and measures 336-340 contain rests. Measure numbers 330, 335, and 340 are marked above the staff.

Measures 345-350: Measures 345-350 contain whole notes, and measures 351-355 contain rests. Measure numbers 345 and 350 are marked above the staff.

Measures 355-360: Measures 355-360 contain whole notes, and measures 361-365 contain rests. Measure numbers 355 and 360 are marked above the staff.

Measures 365-375: Measures 365-370 contain whole notes, and measures 371-375 contain rests. Measure numbers 365, 370, and 375 are marked above the staff.

Measures 380-385: Measures 380-385 contain whole notes, and measures 386-390 contain rests. Measure numbers 380 and 385 are marked above the staff.

Measures 390-395: Measures 390-395 contain whole notes. Measure numbers 390 and 395 are marked above the staff.

Piano score for Pno (Piano) in B-flat major, 4/4 time. The score consists of six systems of music, each labeled with a measure number. The key signature has two flats (B-flat and E-flat). The time signature is 4/4. The score includes rests, quarter notes, and eighth notes. The final system ends with a double bar line.

400

405

410

415

420

425

430

435

440

445

450

455